

Application Pad © version 3.7 - March 1993



[Introduction](#)

[Setup](#)

[AppPad3.INI File](#)

[The Application Pad](#)

[Other Features](#)

[Author's Information](#)

## Introduction

This program was inspired by the **Application Dock** on the **NeXT™** machines. Before the program was written, many variations of the Application Dock existed. This program was written as an improvement over those. I sincerely hope that you will find this software useful.

## Setup



For the program to run properly, you have to copy the following files into the WINDOWS directory. If you use SETUP.BAT to install the program, this will be done automatically for you. The files are: **APDLL.DLL**, **APPPAD3.INI**, **APPPAD.HLP**, **BLANKSCR.DLL** & **BWCC.DLL**. Also, if you are using Windows 3.0, you need to copy the file **SMALLE.FON** into the **WINDOWS\SYSTEM** directory.

Next, edit the file **APPPAD3.INI** to indicate correctly the location of the applications that you would like to launch from the Application Pad.

## AppPad3.INI File

Application Entries

StartUp

Position

Clock

ClockHour

Eyes

ActiveWindow

OnTop

Sleep

Screen Blanker

StartGroup

TopOfPad

Offsets

## Application Entries

The number of applications that can be launched from AppPad is not limited to the vertical dimension of the screen (as in most other variations). In fact, you can have up to 50 entries in the `AppPad3.INI` file. As a matter of interest, the number 50 was chosen arbitrarily, and not because of programming constraints.

Each application entry must be in the following format:

```
entry number = application file / groupname ; [working directory] ; [icon file] ; [icon number] ; [starting status]
```

[ ] - indicate optional.

Starting from this version, you can group your applications under several headers (before this, all applications are grouped under `[applications]`). The `application file / groupname` field will specify either an application file or a group name. A group name must always begin with the '#' character to differentiate from an application file. For example, if you have a group named `[others]`, the `groupname` field should be: `#others`. The `start status` field will have no effect on entries that indicate groups. (There must always be an `[applications]` group.)

Note that there should be no blank spaces immediately before and after the semi-colons. Also, specify full pathnames for the files. While the `working directory`, `icon file`, `icon number` & `starting status` fields are optional, the semi-colons aren't!

The `working directory` field specifies the work directory of the application. The `icon file` field can take on `ICO`, `EXE` & `DLL` file types. Both EXE & DLL files can contain more than one icon; the `icon number` option allows you to select a particular icon. If you aren't sure which icon to choose initially, leave the field blank (and AppPad will default it to 0). You can make selection on the icon directly from the Pad later on. If the `icon file` field is left blank, AppPad will extract the icon from the `application file` instead.

The `starting status` determines how the application will look when it is first executed. It can have any of the following number:

0	-	normal window
1	-	minimized window / iconized window
2	-	maximized window

## StartUp

You can specify applications that you want to execute automatically when you first start up Windows. This is similar to putting icons into the **STARTUP** folder of the Program Manager. The application entries are placed under the group heading **[startup]** in the **AppPad3.INI** file. The format of the entries is:

`entry number = application file ; [starting status]`

[ ] - indicate optional.

The **starting status** determines how the application will look when it is first executed. It can have any of the following number:

0	-	normal window
1	-	minimized window / iconized window
2	-	maximized window

## Position

Nobody says the Pad has to be on the right side. For those who want it on the left, just change the value of **position** to 1. In short, 1 for Left & 0 for Right. This option can be changed dynamically from the [Settings Dialog Box](#).

## Clock



An optional digital clock is included in the Pad. It shows seconds, date, day of week and the month too. It can be enable by setting **clock** to 1 (0 to disable).This option can be changed dynamically from the [Settings Dialog Box](#).



## ClockHour

You can choose between a 12-hr clock and a 24-hr clock. The value of **ClockHour** should be set to either 12 or 24. This option can be changed dynamically from the [Settings Dialog Box](#).

For the 12-hr clock option, a small protruding button at the bottom right hand corner of the clock icon signifies AM, while a small depressed button signifies PM.

## Eyes



A pair of "eyes" that tracks the mouse cursor and does nothing else is included in the Pad. It is optional and can be enabled by setting **eyes** to 1 (0 to disable). This option can be changed dynamically from the [Settings Dialog Box](#).

## ActiveWindow

Have you ever experienced moving from one window to another and having to click on the destination window to make it active? Now, you can be saved the trouble of clicking. When the value of **ActiveWindow** is set to 1, by positioning the mouse cursor on any (well, almost) visible part of a window will make it active.

This feature needs a bit of getting used to. Due to the strange way WINDOWS' windows are created, sometimes you may experience a "flipping active windows" effect though you may be moving within the same window. However, this effect should not cause any harm. This option can be changed dynamically from the [Settings Dialog Box](#).

## OnTop

A Windows 3.1 feature. When enabled (set to 1), the Pad will always be on top. That is, it will not be overlapped by any windows except those that are created as always-on-top too. This option can be changed dynamically from the [Settings Dialog Box](#).

This option on the Settings Dialog Box will be greyed out if you are using Windows 3.0.

## Sleep

A screen blanking feature is available. Blanking time is variable by changing the value of `sleep` (in number of seconds). If the value is 0, screen blanking is disabled. This option can be changed dynamically from the [Settings Dialog Box](#).

## ScreenBlanker

There are a number of **screen blankers** that you can choose from. You can see and select any of the **screen blankers** available from the [Settings Dialog Box](#).

## StartGroup

This option specifies which application group for AppPad to start with. The default will be the [applications] group. This option can be changed dynamically from the Settings Dialog Box.

## TopOfPad

System variable used by the AppPad. Do not alter value.



## Offsets

System variables used by the AppPad. Do not alter value.

## The Application Pad

Aligning the Pad

Edit Entry

Exit

Help File

Icon Selection

Inserting New Entry

Launching Application

Movement

Removing Entry

Restart Feature

Scrolling

Tool Icon

## Aligning the Pad

Double click the **right mouse button** once on the Pad (except on the AppPad Logo Icon) will cause the Pad to be aligned with the **top** of screen (if it is not already aligned). Double click it a second time will move it to the **bottom** of the screen, revealing only the essential system icons.

## Edit Entry

To edit an application icon entry on the Pad, position your mouse pointer over the application icon. Then double click the **left mouse button** while holding down the **Ctrl** key, and the following dialog box will appear:



The image shows a dialog box titled "Pad Entry". It has several input fields and a group box. The "Application Name" field contains "c:\windows\notepad.exe". The "Working Directory" field contains "c:\work". The "Icon Name" field is empty. The "Icon Number" field contains "0". To the right of the "Icon Number" field is a group box titled "START" containing three radio button options: "Normal" (selected), "Iconized", and "Maximized". At the bottom of the dialog are two buttons: "OK" with a green checkmark icon and "Cancel" with a red X icon.

Perform the necessary changes and click on the **OK** button to save changes or the **Cancel** button to ignore changes made.

## Exit

To exit AppPad (or Windows if AppPad is the shell), double click the left mouse button on the AppPad Logo Icon. Location of the Pad and the Icon selection changes will be saved

## Help

This help file can be activated by double clicking the **left mouse button** on the background of the Tool Icon.

## Icon Selection

If the application contains more than one icon, you can select a particular one directly from the Pad. Position the mouse cursor directly over the program icon you want to change. Then, use the keyboard **Right** & **Left** arrow keys to scroll through the icons. The changes you make will only be saved upon exit or you when switch to another group. Using the Restart feature will cause the icon selection changes to be discarded.

## Inserting New Entry

To insert a new application entry onto the Pad, place your mouse pointer at the position you want to insert. Then press the **Ins** Key and the following dialog box will appear:.



The dialog box titled "New Pad Entry" contains the following fields and controls:

- Application Name:** A text input field.
- Working Directory:** A text input field.
- Icon Name:** A text input field.
- Icon Number:** A text input field.
- START:** A group box containing three radio buttons:
  - Normal
  - Iconized
  - Maximized
- Buttons:** "Insert Before", "Insert After", and "Cancel" (with a red X icon).

Fill in the respective information of the new application entry. Click on the **Insert Before** button if you want the new entry to be inserted before the current icon. Click on the **Insert After** button if you want the new entry to be inserted after the current icon.



## Launching Applications

Applications are launched by double clicking the left mouse button on the program icons. Similar to the Windows Program Manager, an application will be launched as minimized if you hold down the **Shift** Key while you double click.

If the application file / groupname field contains a group, the Pad icons will be replaced by the application entries of the new group.

Depending on the starting status field of the entry, the application will be looked differently when started up.

## Movement

The Pad can be slided vertically. To move it, place the mouse cursor on any part of the Pad. Then depress the right mouse button. Keep the button depressed and move vertically, and the Pad will follow. Release the mouse button to stop.

On slower machines, the Pad movement may not be able to catch up with the mouse cursor. Thus, you may want to move a bit slower.

## Removing Entry

To remove an entry from the Pad, position your mouse pointer over the application icon of the entry you want to remove and press the **Delete** key. You will be prompted to confirm your request.

## Restart Feature

After making changes to the [AppPad3.INI](#) file while in WINDOWS, you **have to** execute the restart procedure. You can restart the AppPad by double clicking the right mouse button on the AppPad Logo Icon. Note that changes made to the selection of icons directly from the Pad will not be saved.

Alternatively, you can cause the program to reread the INI file by switching between groups (if you have more than one). One note to remember is that if you switch from group A to group B, the contents of group A in the INI file will be overwritten with whatever is in memory. Thus, if you want to reread the contents of group A, you should currently be in some other group, edit the [AppPad3.INI](#) file and then switch to group A.

## Scrolling

If the **AppPad3.INI** file contains more application entries than the Pad can show at any one time, you can scroll the program icons on the Pad using the keyboard **Up** & **Down** arrow keys. **Home** key will bring you to the top of the program icons and **End** key will bring you to the bottom.

Another way to scroll the icons is to make use the Tool Icon.

## Tool Icon



The second Icon of Pad (the one just below the AppPad Logo Icon) is called the Tool Icon. It has 4 child icons that can be separately selected by double clicking the left mouse button.

The 'e' child icon will activate the Settings Dialog Box.

The '?' child icon brings up the About AppPad Dialog Box.

The 'Up' & 'Down' arrow child icon serve to scroll the programs icons on the Pad up and down. You can also make use of the keyboard to do this. (See Scrolling)

You if double click on the background of the Tool Icon, it will bring up this Help File.

## Other Features

Immediate Blank Screen

Loading AppPad as the SHELL

Settings Dialog Box

## Immediate Blank Screen

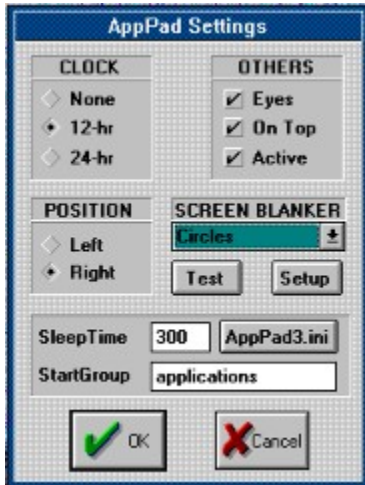
If the Sleep option is set to any value other than 0, you can activate the screen blanker immediately by resting your mouse cursor on the top right hand corner of your screen. The **screen blanker** used depends on the ScreenBlanker option in the `appad3.ini` file.



## Loading AppPad as the SHELL

Yes, AppPad can be loaded as the SHELL, replacing the Program Manager. To do that, edit the file SYSTEM.INI located in your WINDOWS directory. Under the keyword **shell**, replace the filename **program.exe** with **{path}AppPad.EXE**.

## Settings Dialog Box



The new **Settings Dialog Box** allows to you to change most options dynamically within Windows. Changes made on most options are reflected immediately. You can edit the **APPAD3.INI** file by clicking on the **AppPad3.ini** button.

## Author's Information

I hope you have found this program useful. The Application Pad is **NOT** a FREEWARE. The programmer has spent many hours to write it and is constantly improving it. You can keep and try it out for a maximum period of 10 days. After that, if you so decide to continue to use it, you are to register by sending **US\$15** to the address given below. Registered users will be given a registration number and will receive future upgrades at **NO** additional cost (less shipping & handling).

**DISCLAIMER.** You use this program at your own risk. The programmer will not be held responsible for any ill effects that this program may cause to your system and any damage that may result.

The programmer welcomes any queries and suggestions. Please indicate the version number of the program you are currently using when you write.



**LEE CJIN PHEOW**  
6 N. Charter St. Apt #2,  
Madison, WI 53715  
United States of America

-----  
Copyright © March 1993

